

Lever Replacement Guide – SmartBrake Brake Lever Slim & Thumb Brake



Tools Required

- **Torx T20** – Handlebar bracket
- **Phillips screwdriver** – Battery cover and inner cover
- **Torx T6** – PCB screws

1. Remove the Remote from the Handlebar Bracket

There is **no need** to remove the bracket from the bike.

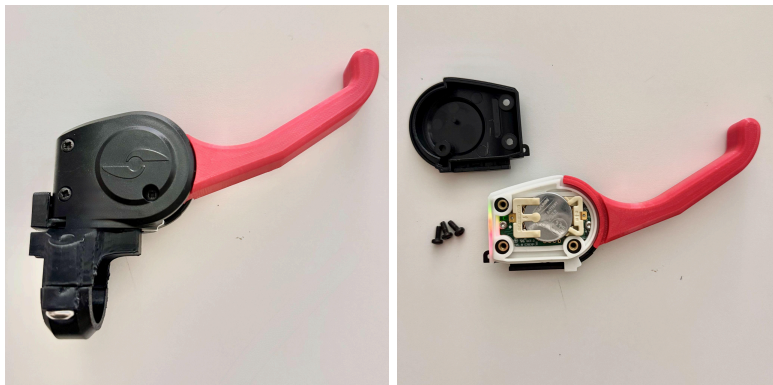
1. Press the **small latch** (“nob”) on the side of the bracket.

Slide the remote sideways to release it from the bracket.



2. Open the Top Cover

1. Remove the **three Phillips screws** from the top.
2. Lift off the top cover.



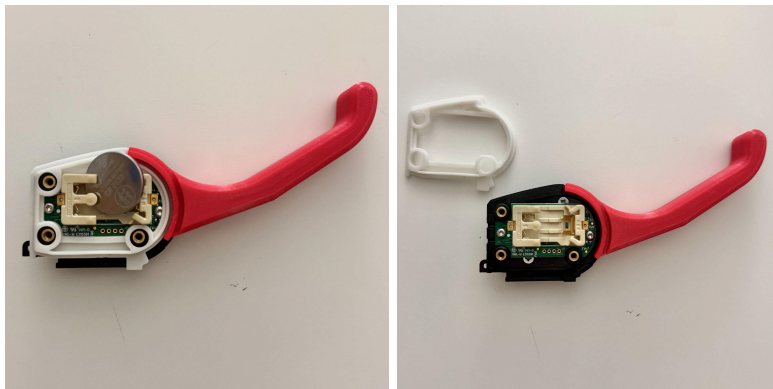
3. Remove the Battery (if needed)

1. Press the latch in the middle of the battery holder.
2. The battery will pop up and can be removed.

Note:

The small holders on the opposite side of the battery may break—this does **not** affect function.

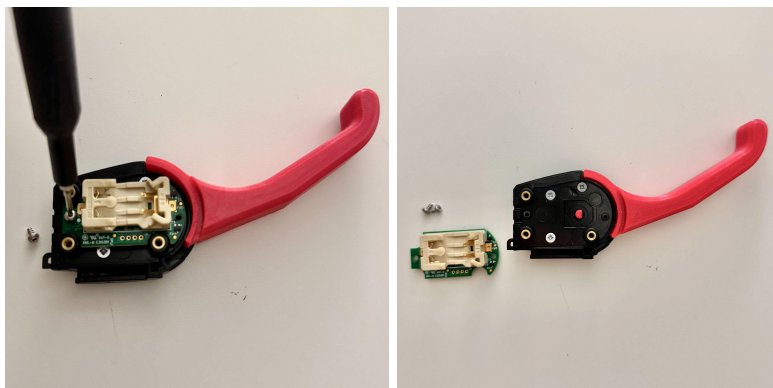
Once the top cover is reinstalled, the battery will be held securely in place.



4. Remove the PCB

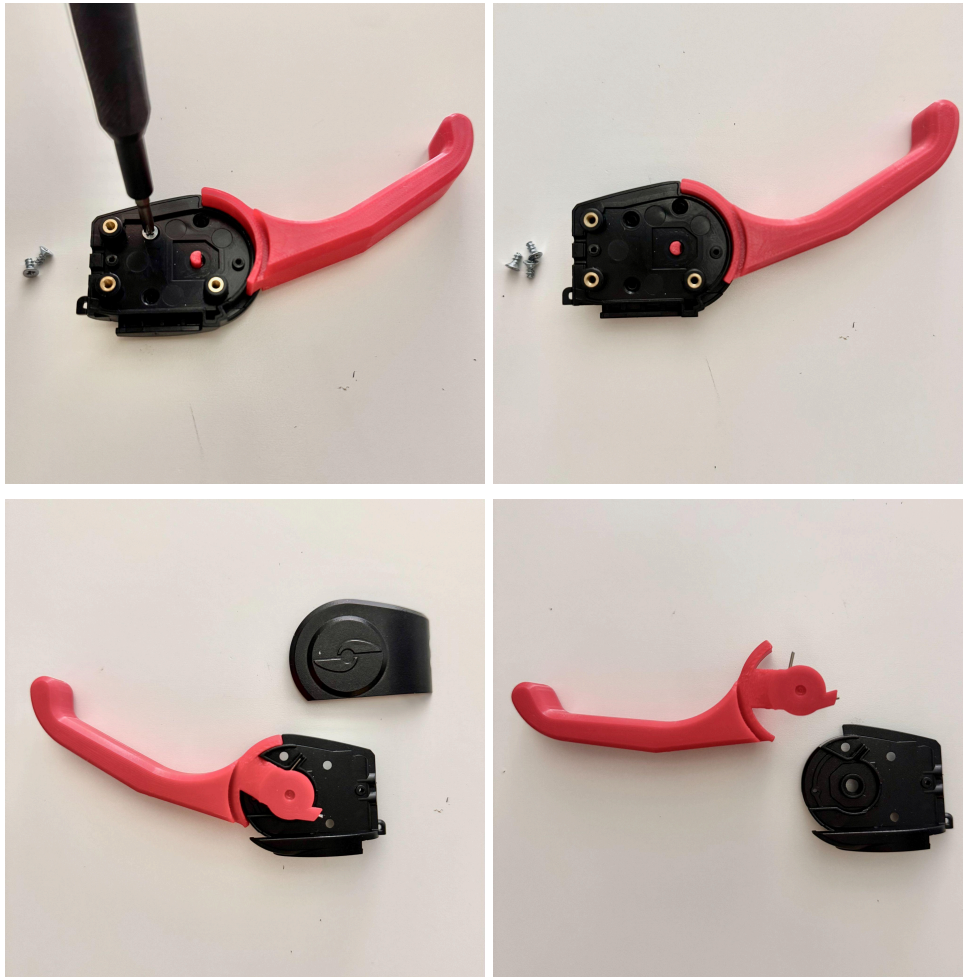
1. Unscrew the **two PCB screws** using a Torx T6.

In some remotes, alternative screw types may appear—use the correct tool accordingly.



5. Access the Lever Mechanism

1. Remove the **three inner Phillips screws** to access the lever.
2. Turn the remote around.
3. Remove the inner locking plate.
4. Pull the lever out of the housing.



6. Reassembly

1. Insert the spring into the lever.
2. Make sure the spring arm is positioned so it presses against the inner wall, providing the required return force.
3. Reassemble all parts in the **reverse order** of disassembly.
4. Slide the remote back onto the handlebar bracket until it **clicks** into place.

